



Anchor Channel

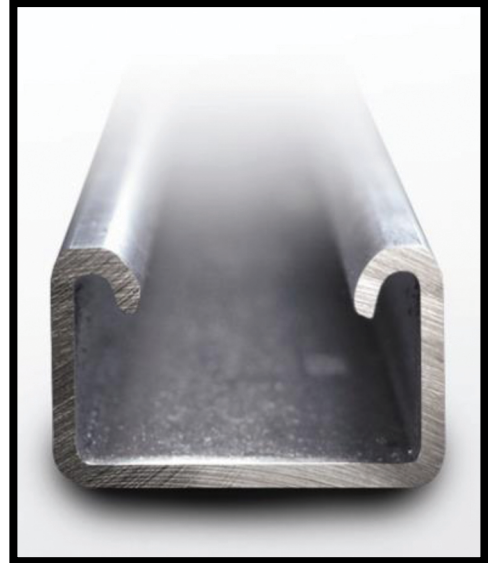
Product Guide

Anchor channel is used to mount the cushion clamp assemblies. The channel is attached to walls or machinery as the user or designer sees fit, and the assemblies (along with their tube or pipe) are installed. Channel is also available in double format, which is two channels welded back-to-back.

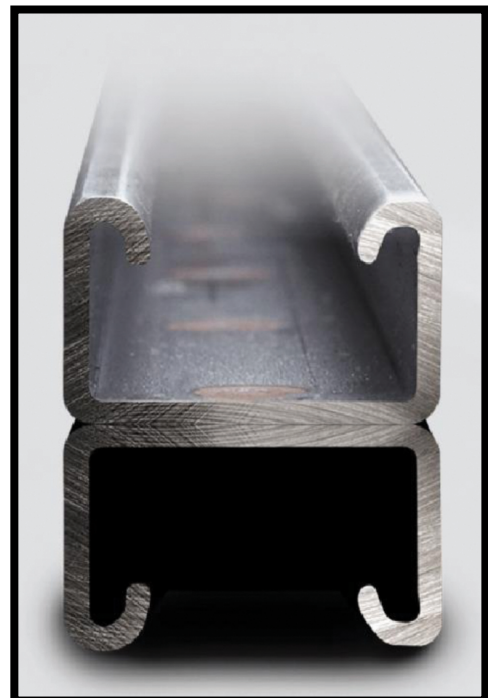
Key Features

- All channel widths are 1-5/8"
- All steel channel shipped with plain finish (hot rolled p.o.)
- Lengths listed are stock sizes. Special lengths are available; please contact your local distributor or the factory.
- All special cut tolerances are $\pm 1/8$ "
- Available in 304 and 316 stainless steel.

Single Anchor Channel



Double Anchor Channel



UL Standard 2043, 2nd Edition:
"Fire Test for Heat and Visible Smoke Release
for Discrete Products and Their Accessories
Installed in Air-Handling Spaces."



Anchor Channel

Product Guide

Part Numbering System

Channel part numbers are 10 digits. The example below shows the breakdown of typical part numbers for anchor channel.

Example for: 4' of single steel channel with 1" height.

SERIES	LENGTH	MATERIAL	HEIGHT
121			

1. The first three numbers is the series:

121 = Single 122 = Double

SERIES	LENGTH	MATERIAL	HEIGHT
121	048		

2. The next three numbers is length:

3' = 036 4' = 048 10' = 120

SERIES	LENGTH	MATERIAL	HEIGHT
121	048	1	

3. The next digit is material:

Mild Steel = 1 304 Stainless = 5 316 Stainless = 6

SERIES	LENGTH	MATERIAL	HEIGHT
121	048	1	203

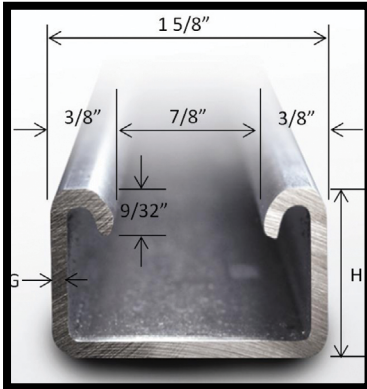
4. The last three numbers is the height of the material:

1" = 203 7/8" = 202 13/16" = 101

PART NUMBER
121048-1-203

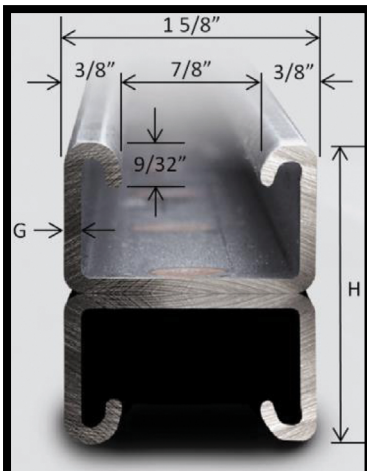
5. Finally, put them together to get final part number.

Single Anchor Channel



PART NO.	HEIGHT (H)	GUAGE (G)	MATERIAL	LENGTH
121048-1-203	1"	12 GA.	Mild Steel	48"
121120-1-203	1"	12 GA.	Mild Steel	120"
121048-1-202	7/8"	12 GA.	Mild Steel	48"
121120-1-202	7/8"	12 GA.	Mild Steel	120"
121048-1-101	13/16"	14 GA.	Mild Steel	48"
121120-1-101	13/16"	14 GA.	Mild Steel	120"
121048-5-101	13/16"	14 GA.	304 SS	48"
121120-5-101	13/16"	14 GA.	304 SS	120"
121048-6-101	13/16"	14 GA.	316 SS	48"
121120-6-101	13/16"	14 GA.	316 SS	120"

Double Anchor Channel



PART NO.	HEIGHT (H)	GUAGE (G)	MATERIAL	LENGTH
122048-1-203	2"	12 GA.	Mild Steel	48"
122120-1-203	2"	12 GA.	Mild Steel	120"
122048-1-202	1-3/4"	12 GA.	Mild Steel	48"
122120-1-202	1-3/4"	12 GA.	Mild Steel	120"
122048-1-101	1-5/8"	14 GA.	Mild Steel	48"
122120-1-101	1-5/8"	14 GA.	Mild Steel	120"
122048-5-101	1-5/8"	14 GA.	304 SS	48"
122120-5-101	1-5/8"	14 GA.	304 SS	120"
122048-6-101	13/16"	14 GA.	316 SS	48"
122120-6-101	13/16"	14 GA.	316 SS	120"