



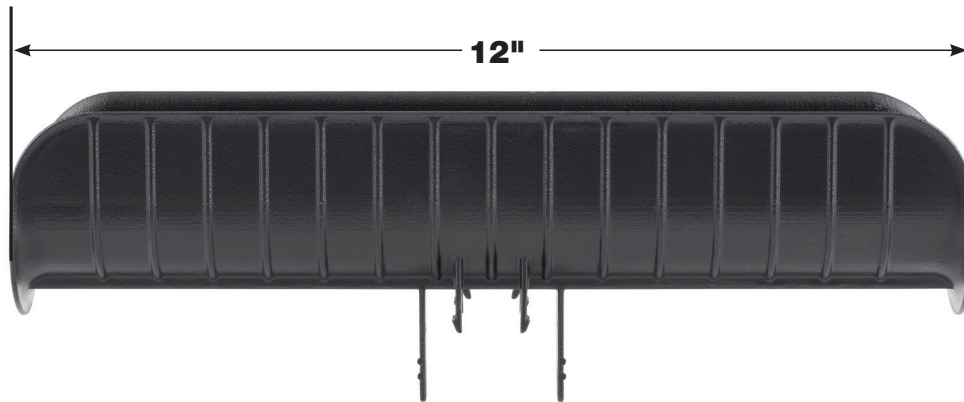
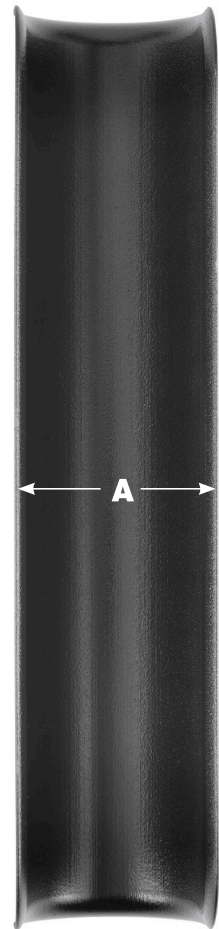
Bronco® Insulation Tube & Pipe Saddle

PART NO. BLACK	PART NO. WHITE	DIMENSION A
HZSB225	HZSW225	2-1/4"
HZSB325	HZSW325	3-1/4"
HZSB425	HZSW425	4-1/4"
HZSB525	HZSW525	5-1/4"
HZSB625	HZSW625	6-1/4"
HZSB825	HZSW825	8-1/4"



Key Features of Hydra-Zorb® Saddle:

- Meets the UL Classified 2043 Flame Spread/Smoke Index for use in air handling systems
- Fits perfectly on anchor channel of any depth
- Plastic legs snap into channel while stability tabs overlap the channel exterior for a secure installation
- External stability tabs with grooved slot feature for optional self-tapping screw
- Manufactured from high-strength Polypropylene Copolymer
- Single piece product—no assembly or tools required
- Enhanced safety lip prevents insulation crushing and tearing from pipe movement
- Available in black and white to match insulation
- Excellent finished appearance
- Made in the U.S.A.



1751 Summit Drive | Auburn Hills, Michigan 48326 | 248-373-5151



Hydra-Zorb.com



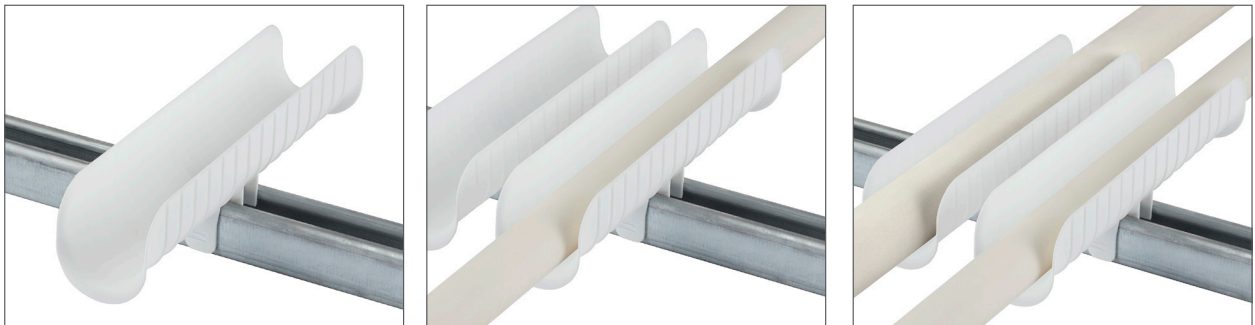


Bronco® Insulation Tube & Pipe Saddle

Easy installation onto channel, simply set insulation tube/pipe run into saddle.



Available in white or black to match insulation.



APPROVAL

Project: _____

Address: _____

Engineer: _____

Contractor: _____

Date: _____

Approved Not Approved Approved With Note

Note: _____



1751 Summit Drive | Auburn Hills, Michigan 48326 | 248-373-5151



Hydra-Zorb.com

